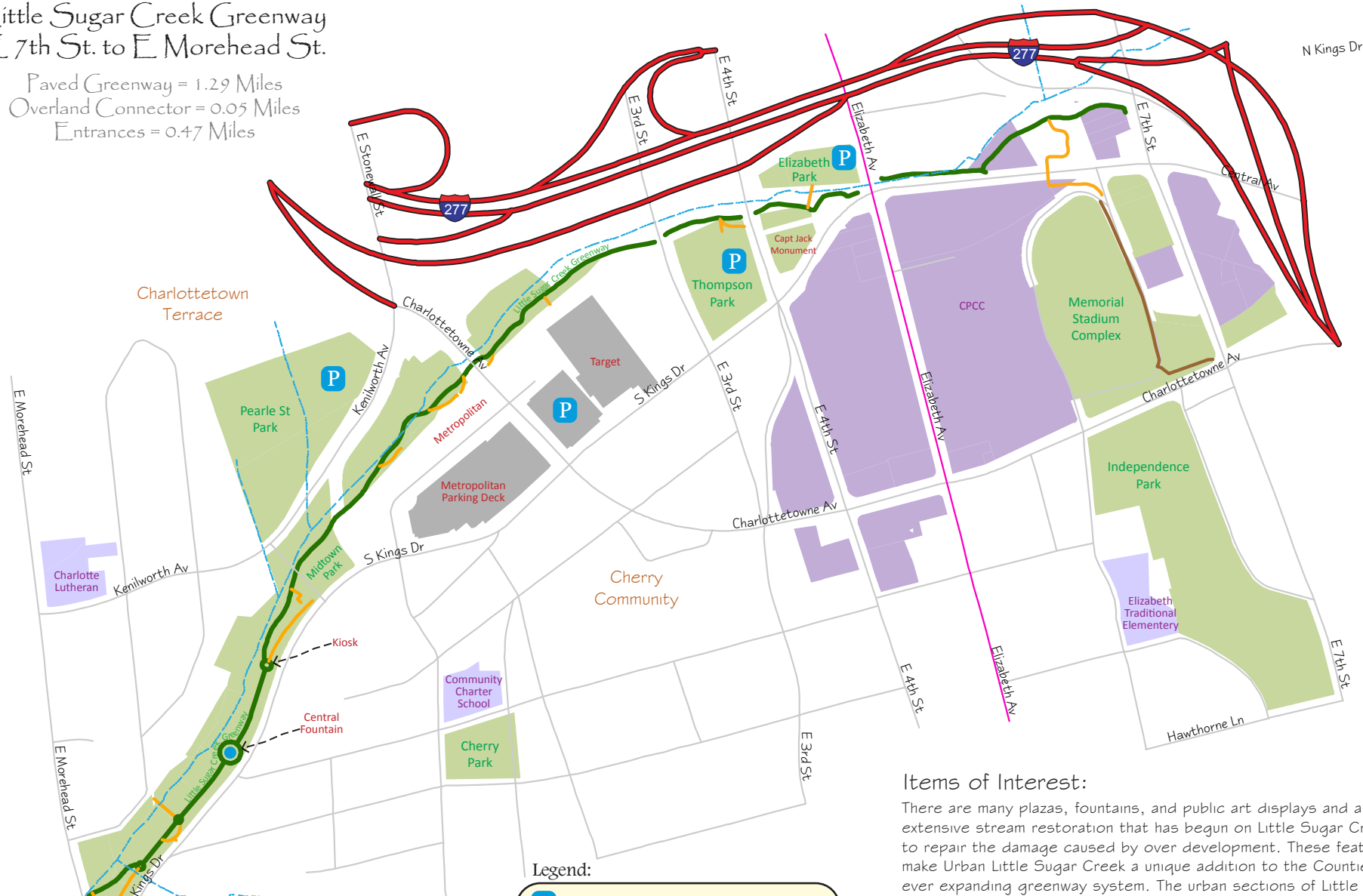


Little Sugar Creek Greenway E 7th St. to E Morehead St.

Paved Greenway = 1.29 Miles
Overland Connector = 0.05 Miles
Entrances = 0.47 Miles



Little Sugar Creek - Urban Parking

- Pearle St Park on Kenilworth Av., across from the Metropolitan
- Metropolitan deck at the corner of S Kings & Charlotte
- Thompson Park between 3rd & 4th streets, adjacent to S Kings Dr

Legend:

Parking	Streets
Greenway	Bicycle Route (Proposed)
Neighborhood Entrance	CPCC
Overland Connector	Park Property
Streams	School Property
Interstate	

Items of Interest:

There are many plazas, fountains, and public art displays and an extensive stream restoration that has begun on Little Sugar Creek to repair the damage caused by over development. These features make Urban Little Sugar Creek a unique addition to the Counties ever expanding greenway system. The urban sections of Little Sugar Creek begin at E 7th St and parallel Kings Dr to Morehead St, where the greenway continues as Liz Hair Nature Walk. At the intersection of 3rd St & Kings Dr sits the statue of Captain James Jack on horseback, which serves as the iconic first sculpture on the developing Trail of History. There will be 21 sculptures that comprise the Trail of History, each displayed along the greenway and depicting events of historical significance for Mecklenburg County.

The greenway continues downstream through historic Thompson Park, the Metropolitan, Midtown Park, past several fountains, to a large clock tower on the corner of E Morehead St & S Kings Dr.

